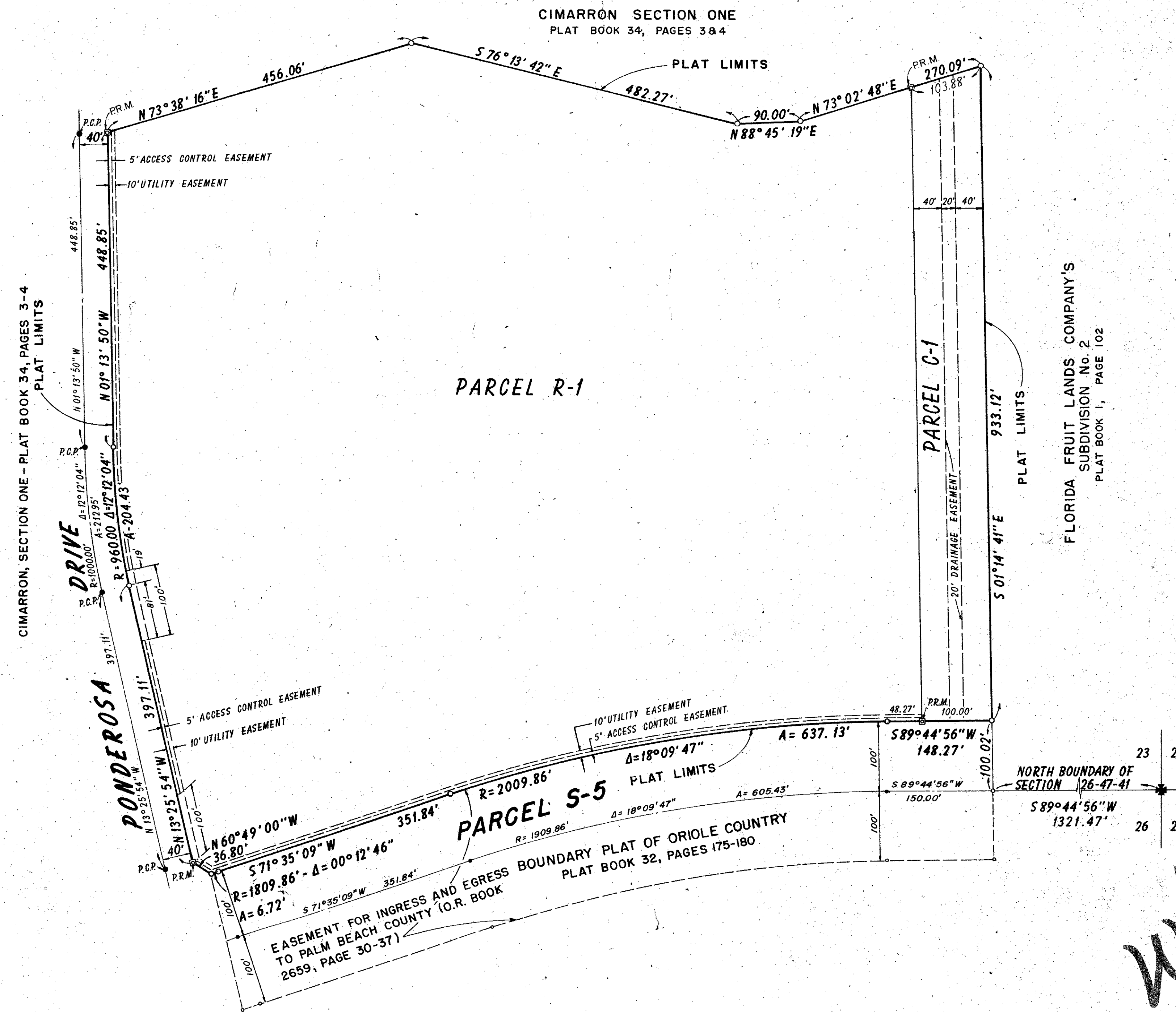
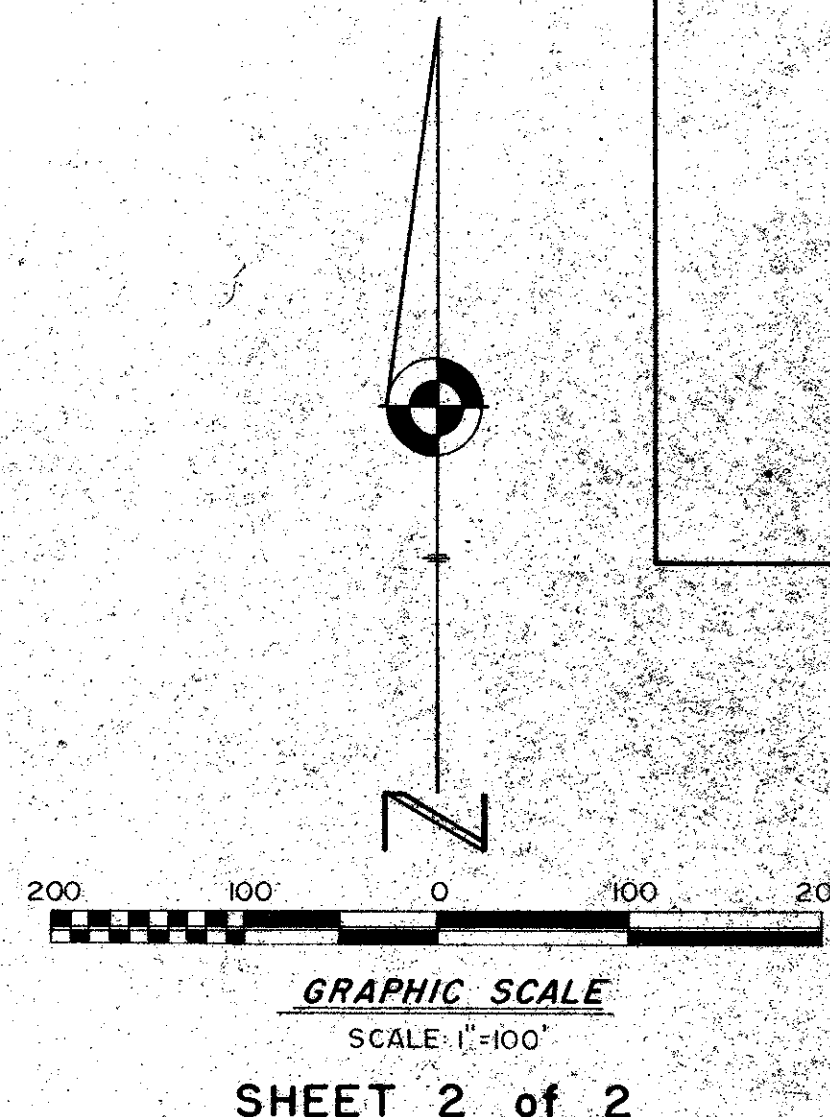


# WHISPERING PINES PARK

A REPLAT OF TRACT "I", BOUNDARY PLAT OF ORIOLE COUNTRY  
(PLAT BOOK 32, PAGES 175-180) SECTIONS 23 AND 26, TOWNSHIP  
47 SOUTH, RANGE 41, EAST, PALM BEACH COUNTY, FLORIDA

PREPARED BY  
**BROOME AND FARINA, INC.**  
ENGINEERS - PLANNERS - SURVEYORS  
CORAL SPRINGS, FLORIDA  
By: JOHN A. FARINA, P.L.S. 1564

193



*Whispering Pines Park*

*Logan Ruv*

38  
193  
0275-316